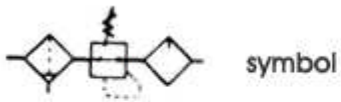


Air Filter Combination (Two Elements)AC1010-5010 Series



symbol

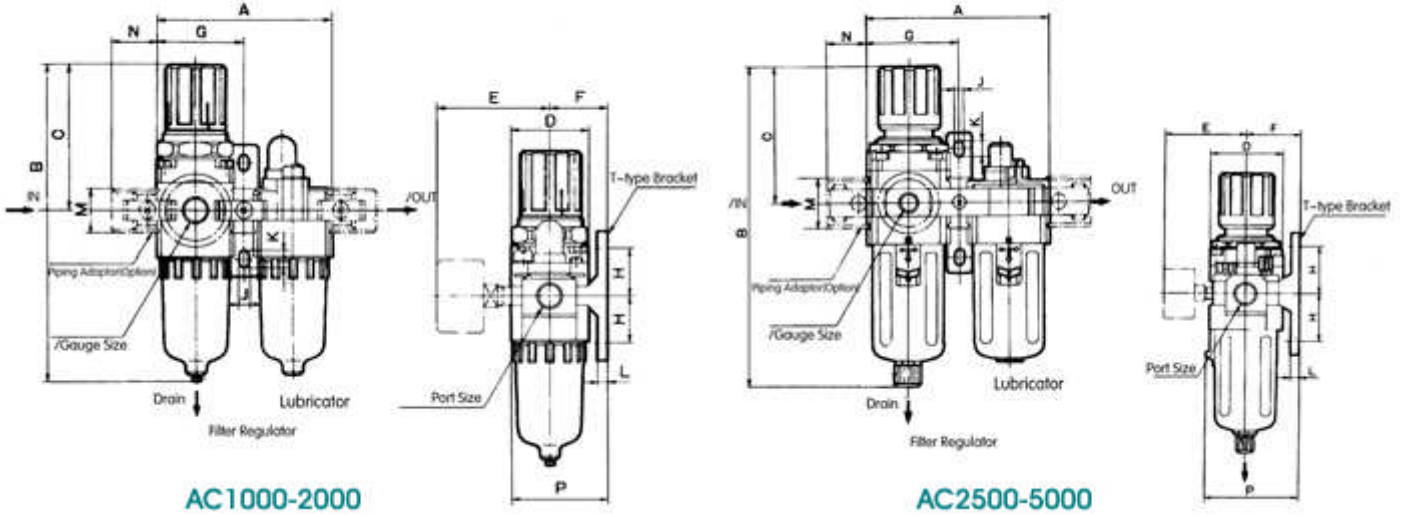


Ensured Pressure Resistance	1.5MPa(15kgf/cm ²)
Highest Working Pressure	1.0MPa(10kgf/cm ²)
Ambient and Fluid Temperature	5-60℃
* Filter Precision *	25 μm
Recommended Oil Use	Turbine NO.1 Oil ISOVG32
Container Material	Polycarbonate
Protective Cover	AC1000-2000(Not Available) AC3010-5010 (Available)
Pressure Regulating Range	AC1010: 0.05-0.7MPa(0.5-7kgf/cm ²) AC2010~5010: 0.05-0.85MPa(0.5-8.5kgf/cm ²)
Valve Type	With Overflow
5、50 μm available in addition	

Model	Specifications						Accessories	
	Assembly		Rated Flow (L/min)	Port Size (G)	Pressure Gauge Size	Weight (kg)	Bracket	Pressure Gauge
	Filter with pressure reducer	Mist Separator						
AC1010-M5	AW1000	AL1000	90	M5	1/16	0.22	Y10T	G-27-10-R1
AC2010-01	AW2000	AL2000	500	1/8	1/8	0.66	Y20T	G36-10-01
AC2010-02								
AC3010-02	AW3000	AL3000	1700	1/4	1/8	0.98	Y30T	G46-10-02
AC3010-03								
AC4010-03	AW4000	AL4000	3000	3/8	1/4	1.93	Y40T	G46-10-02
AC4010-04								
AC4010-06	AW4000-06	AL4000-06	3000	3/4	1/4	1.99	Y50T	G46-10-02
AC5010-06	AW5000	AL5000	4000	3/4	1/4	3.20	Y60T	

AC5010-10				1				
Under the circumstance that the supply pressure is 0.7Mpa (7.1kgf/cm ²) and set pressure is 0.5MPa(5.1kgf/cm ²) Rc.and NPT port size are available .								

Overall Dimension Drawing (mm)



Model	port size G	A	B	C	D	E	F	G	H	J	K	L	M	N	P
AC1010	M5	58	109.5	50.5	25	26	25	29	20	4.5	7.5	5	17.5	16	38.5
AC2010	1/8-1/4	90	164.5	78	40	56.8	30	45	24	5.5	8.5	5	22	23	50
AC3010	1/4-3/8	117	211	92.5	53	60.8	41	58.5	35	7	11	7	34.2	26	70.5
AC4010	3/8-1/2	154	262	112	70	70.5	50	77	40	9	13	7	42.2	33	88
AC4010-06	3/4	164	267	114	70	70.5	50	82	40	9	13	7	46.2	36	88
AC5010	3/4-1	195	338	116	90	75.5	69.8	97.5	50	12	16	10.5	55.2	40	115